



European Trade Union Confederation [ETUC]  
Confédération européenne des syndicats [CES]



European  
Partners for the  
Environment



Región de Murcia

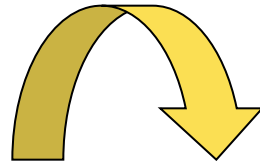
# HOLISTIC MOBILITY MANAGEMENT

BRUSSELS 11 DECEMBER 2012

## SESSION 2 FINANCING THE TRANSITION

### The financing of TENs in Mediterranean Regions

Carmen Sandoval



### CPMR/IMC Transports Working Group

Improving accessibility for peripheral maritime Regions: a crucial factor for maintaining their economic competitiveness and aiding the mobility of their populations.

Regions pay close attention to the current negotiations between the Council and Parliament on the **Trans-European Transport Network (TEN-T) Review and the Connecting Europe Facility (CEF) Regulation**.

Need to strengthen the territorial balance of these two instruments and their support for maritime transport in relation to the specific contexts of each of the sea basins.



## CEF Connecting Europe Facility

Key instrument to promote growth, jobs and competitiveness through targeted infrastructure investment at European level.

It will support the development of high performing, sustainable and efficiently interconnected trans-European networks in the fields of transport, energy and digital services.

### **CEF in figures**

#### **CEF 2014-2020 50 billion € (total)**

- €9.1 billion (energy infrastructure)
- €9.2 billion (broadband infrastructure)
- €31.7 billion (transport infrastructure)
  - €21.7 billion
  - €10 billion (earmarked from the Cohesion Fund) \*

*\*For investments exclusively in the Member States eligible to Cohesion Fund support*





## CEF Transport

### *A new policy framework*

The revised policy guidelines for the trans-European transport network (the TEN-T Guidelines) propose a new planning of the TEN-T development, at two levels:

**“comprehensive network”**: a larger, basic network, that includes the relevant existing and planned infrastructure in the Member States, and its outline is the result of the updating and adjustment of the existing TEN-T map.

**“core network”**: is constituted of the strategically most important parts of the TEN-T. It was identified on the basis of a specially designed European methodology

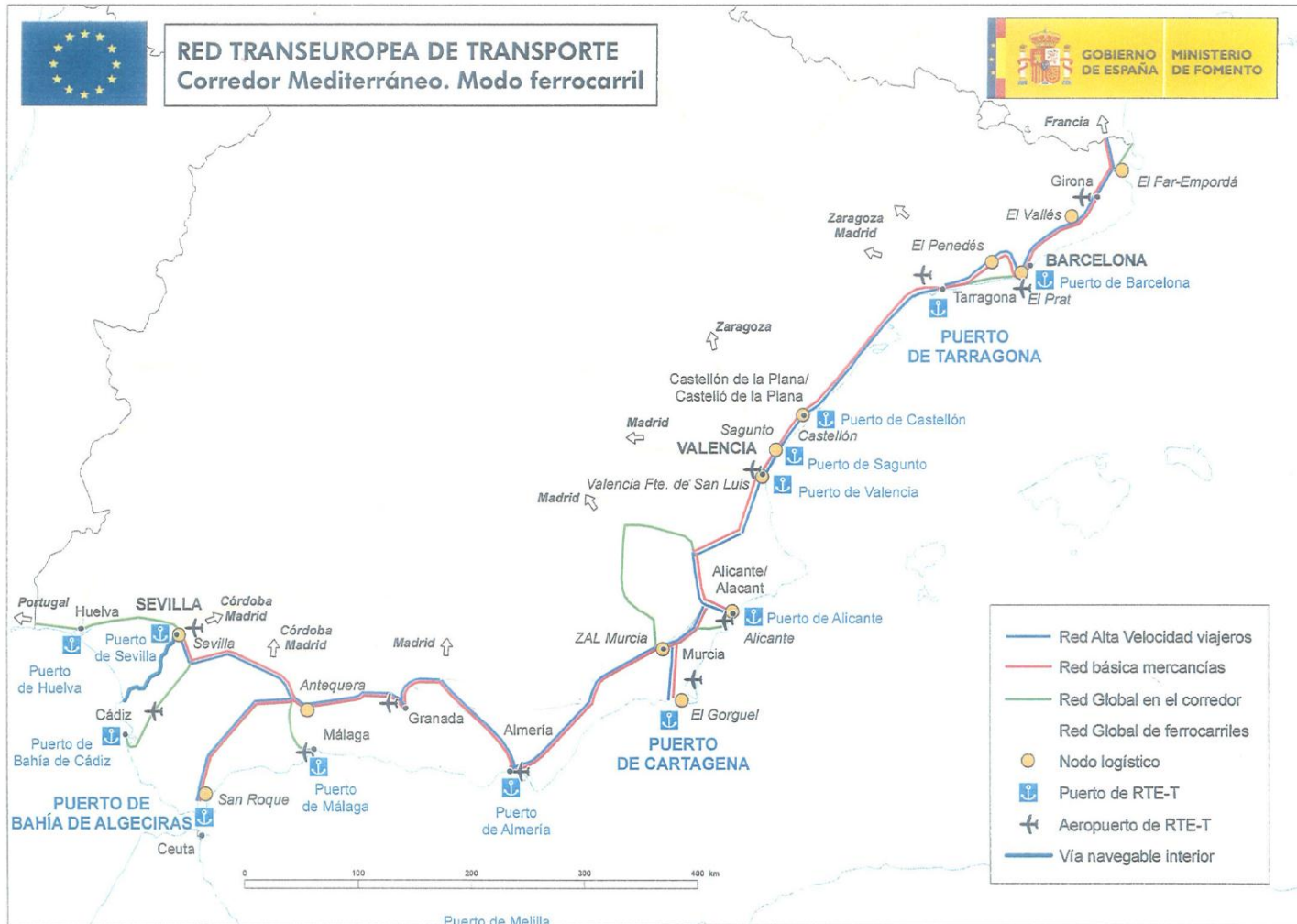
# CONNECTING EUROPE:

## Putting Europe's economy on the move

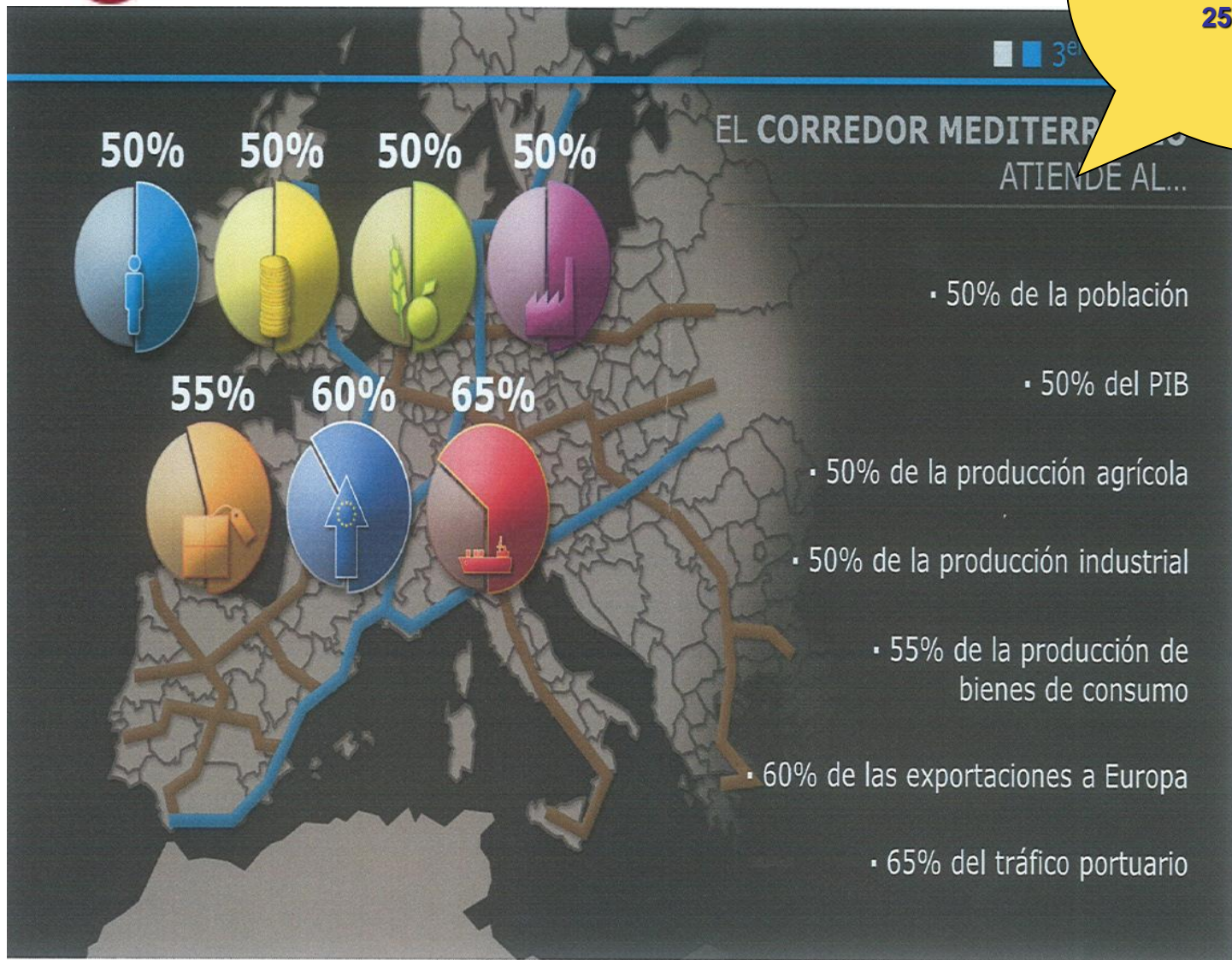
Directorate-General  
for Mobility  
and Transport







**1 EURO>>> 2.4 EUROS**  
**250.000 jobs**





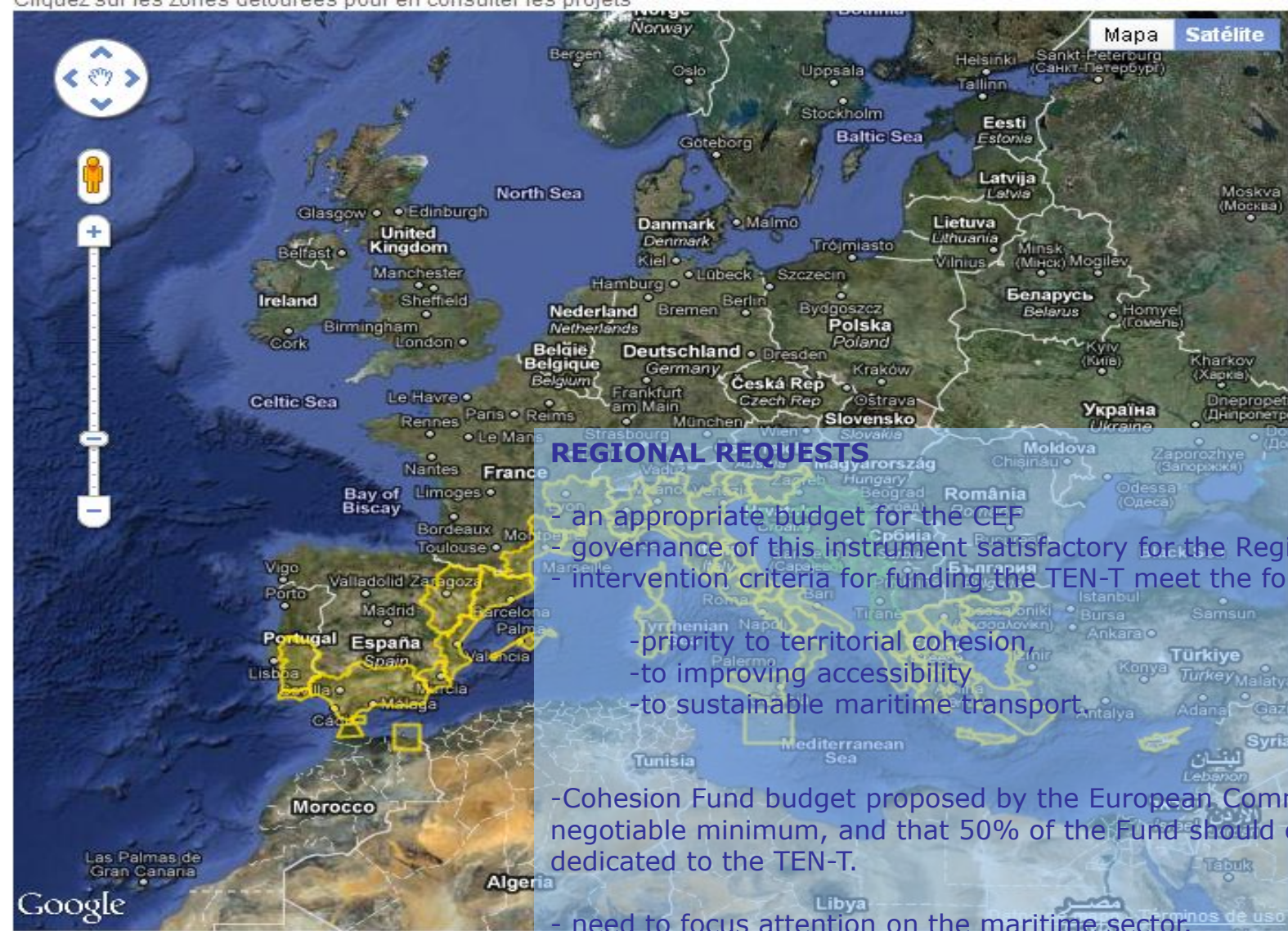
For the period 2014-2020, **€31.7 billion** be invested, via the CEF, to support the TEN-T development.

- Includes **€10 billion** ring fenced in the **Cohesion Fund** exclusively for transport projects in the countries eligible to the Cohesion Fund.
- The remaining **€21.7 billion** will be available for all Member States, including those eligible to Cohesion Fund support, for investing in TEN-T infrastructure.

CEF investments will focus on **projects with high EU added value**, such as building missing cross-border links and removing bottlenecks along main trans-European transport corridors.

- Priority will to transport modes that are less polluting, to the deployment of telematics applications and the use of innovative technologies.
- The aim is to contribute to making the European transport system more sustainable, more efficient and give consumers more choice about how they want to travel.





### REGIONAL REQUESTS

- an appropriate budget for the CEF
- governance of this instrument satisfactory for the Regions
- intervention criteria for funding the TEN-T meet the following objectives:
  - priority to territorial cohesion,
  - to improving accessibility
  - to sustainable maritime transport.
- Cohesion Fund budget proposed by the European Commission is a non-negotiable minimum, and that 50% of the Fund should effectively be dedicated to the TEN-T.
- need to focus attention on the maritime sector.
- To reduce greenhouse gas emissions, port investments need to be encouraged and European funding provided for maritime transport services and Motorways of the Sea, using a more comprehensive instrument than the current Marco Polo programme (via an "eleventh priority corridor" dedicated to maritime transport).

Zone Med     IPA

- Recherche par critères
- Recherche par mots clés
- Recherche par code projet
- Recherche par acronyme



European Trade Union Confederation [ETUC]  
Confédération européenne des syndicats [CES]



European  
Partners for the  
Environment

**Región de Murcia**



**“Europa Fácil- Transport”**



European Trade Union Confederation [ETUC]  
Confédération européenne des syndicats [CES]



European  
Partners for the  
Environment

THANKS YOU  
THANKS YOU